

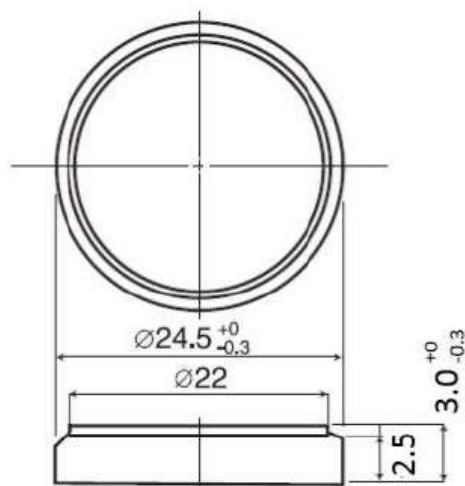
# Product Datasheet

## COIN LITHIUM

CR2430



CR2430



IEC Dimensions (mm)		
Dimension	Maximum	Minimum
Ø	24,5	24,2
H	2,5	2,2

Name	CR2430
Type	Lithium Battery
Nominal Voltage	3 V
Made in	Indonesia
Average weight	4,3 g
Capacity (minimum)	55 mAh
Operation temp. range	-30°C +60°C

Copyright© Advance Power Solutions NV 2022 — All rights reserved. The information contained herein is believed to be correct. However no warranty is made, either expressed or implied regarding the accuracy or the results to be obtained from the use of such information. Test results are according to IEC conditions. Capacities of batteries are depending on drain, temperature and cut-off voltage. Data are subject to change without prior notification.  
October 2022.