	PACCOR Polska Sp. z o. o.		Version <b>0</b>
	Skierniewice Branch		Revision <b>A</b>
	Replaces specification no. <b>n/a</b>		Date: <b>2022.07.27</b>
	From: <b>n/a</b> Due to: <b>n/a</b>		Page <b>1</b> of <b>2</b>
Article: <b>clear Domed PET lid 95mm without hole (800pcs)</b> UPC: <b>5907739614162</b>			
Code: <b>E400210</b>		Specification no. <b>clear DL95 Ø101xH46,5</b> Food contact: <b>cold beverages</b>	
Prepared by: <b>UN</b>			CE mark: <b>no</b>
Checked by: <b>Dept. Super.</b>	Production Supervisor: <b>Dept. Super.</b>		
Attachments:	Article drawing: <b>9958-d.pdf</b> ;		

pic:

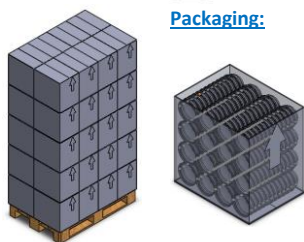


### I. General arrangement

PACCOR Polska Sp. z o. o. will deliver the article **Domed PET lid 95mm without hole (800pcs)** according to and within the limits of this article specification. Supplier food contact safety declaration will follow.

Basic article characteristics are outlined in the attached article drawing: "**9958-d.pdf**". No modifications to the article characteristics listed below are allowed, unless agreed to by both parties and expressed in writing and signed/autographed. ID as per box no. and production date (label).

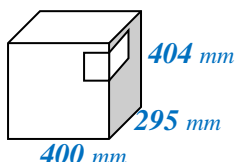
Packaging:



### II. Raw material specification

Compounds	Basic composition	Alternative
Name	<b>50% R-PET / 50% VIRGIN</b>	<b>R-PET flakes up to 80%</b>
Percentage		
Name	<b>AB both sides Formasil</b>	<b>0%</b>
Percentage	<b>1%</b>	
Name	<b>0%</b>	<b>0,0%</b>
Percentage		

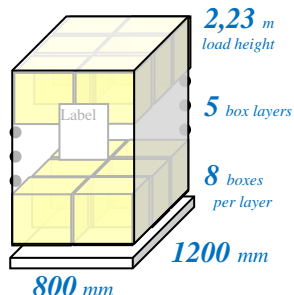
Box inner size:



### III. Sheet specification

Parameter	Value	Tolerance
Thickness	<b>0,36 mm</b>	<b>±0,04 mm</b>
Width	<b>670,0 mm</b>	<b>+2/-2 mm</b>
Color*	<b>clear</b>	<b>BWTC</b>
Layers	<b>E170116 PET 0,36x670 transparent RDK LID 95</b>	

Palletizing:



### IV. Basic article characteristics

Parameter	Value	Tolerance
Length (or Ø)	<b>101, mm</b>	<b>±0,5 mm</b>
Width (or Ø)	<b>,0 mm</b>	<b>mm</b>
Height	<b>46,5 mm</b>	<b>±0,5 mm</b>
Stacking distance	<b>4,00 mm</b>	<b>±0,2 mm</b>
Weight	<b>4, g</b>	<b>±0,4 g</b>
Capacity nominal / brimful	<b>/ ml</b>	<b>ml</b>
Reference:	<b>Domed PET lid 95mm without hole (800pcs)</b>	

\*B – black, W – white, T – transparent, C – any color

Articles in a pile: **50**

Piles in a box: **16**

Articles in a box: **800**

Box inner size: **400x295x404**

Box load gross: **3,7 kg**

Boxes per pallet: **40**

Articles per pallet: **32000**

Pallet height: **2,23 m**

Pallet type: **G300001-EURO**

Pallets per truck: **33**

FTL: **1056000**

Packaging conditions:

- Wooden pallets, clean, dry
- On pallet top: **film**
- Box liner: **LDPE G380305 półrękaw LD 500/0,022 22µ**
- Labels per pallet sides: **2**
- Corner box label: **yes**
- Customer label: **no**
- Box: **cardboard G300177 - 620551 new**

### V. Microbiology tests

Once a month a comparative microbiology test of factory air is run against external air, with air circling articles examination in material groups (rotating) against internal normative levels. Records are kept for a minimum of three years and their values are available to the buyer.

### VI. Delivery & Storage:

Deliveries according to transport regulations, details on the left. Store in dry, clean, shaded areas, away from heat sources, 10-40°C, RH<85%. Articles good to use within a year from production date, if properly stored.

### VII. Other

In case of change in article use or processing the recipient is obligated to contact the supplier with pertaining details as soon as possible.

### VIII. Signed approval

H&Q Manager	Buyer Representative:	
<b>Monika Mikulska</b>		
Date: <b>2022.07.27</b>	Date: <b>2022.07.27</b>	Date:

- Remarks: **No separation between box layers; optional sleeve E380268 HD185/430 - FI95mm - Absorption pads: no; weight: n/a - Stacking: A-A - Sleeve label: yes**

Code: **E400210**

Article: **clear Domed PET lid 95mm without hole (800pcs)**

UPC: **5907739614162**

Specification no. **clear DL95 Ø101xH46,5**

Food contact: **cold beverages**

Prepared by: **UN**

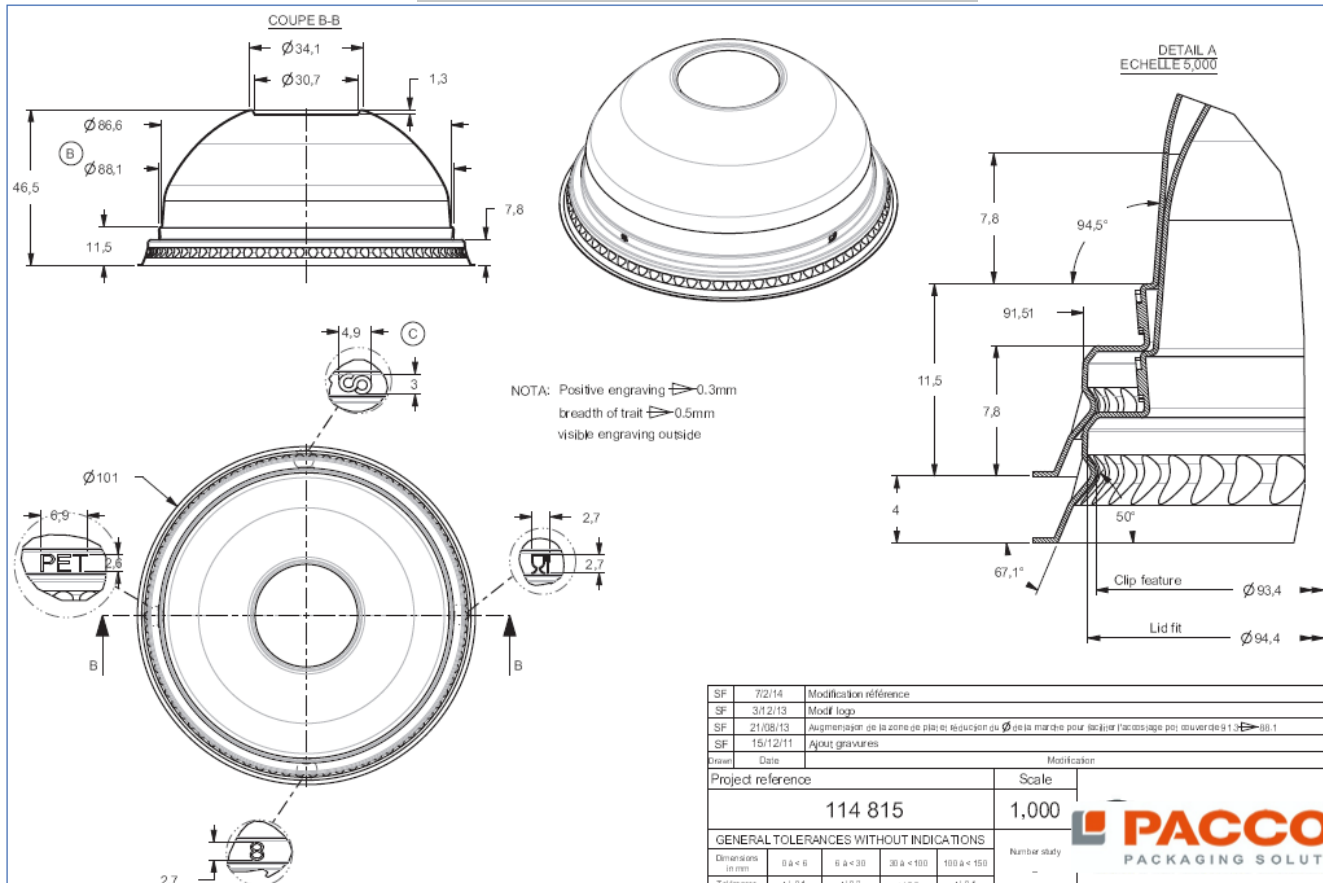
CE mark: **no**

Checked by: **Dept. Super.**

Production Supervisor: **Dept. Super.**

Attachments:

Article drawing: **9958-d.pdf;**



SF	7/2/14	Modification référence	D
SF	3/12/13	Modif logo	C
SF	21/08/13	Augmentation de la zone de placage: réduction du Ø de la marche pour faciliter l'accrochage par ouverture de 1,3 à 0,1	B
SF	15/12/11	Ajout gravures	A
Drawn	Date	Modification	Index
Project reference		Scale	
114 815		1,000	
GENERAL TOLERANCES WITHOUT INDICATIONS		Number study	
Dimensions in mm	0 à 6	6 à 30	30 à 100
Tolerances	±0,1	±0,2	±0,3
By	Date	Material	Ref Da
Drawn	SF	23/11/11	APET
Verif			
Drawing number		9958 02	D



This plan is the property of PACCOR and must not be reproduced or disclosed without written permission