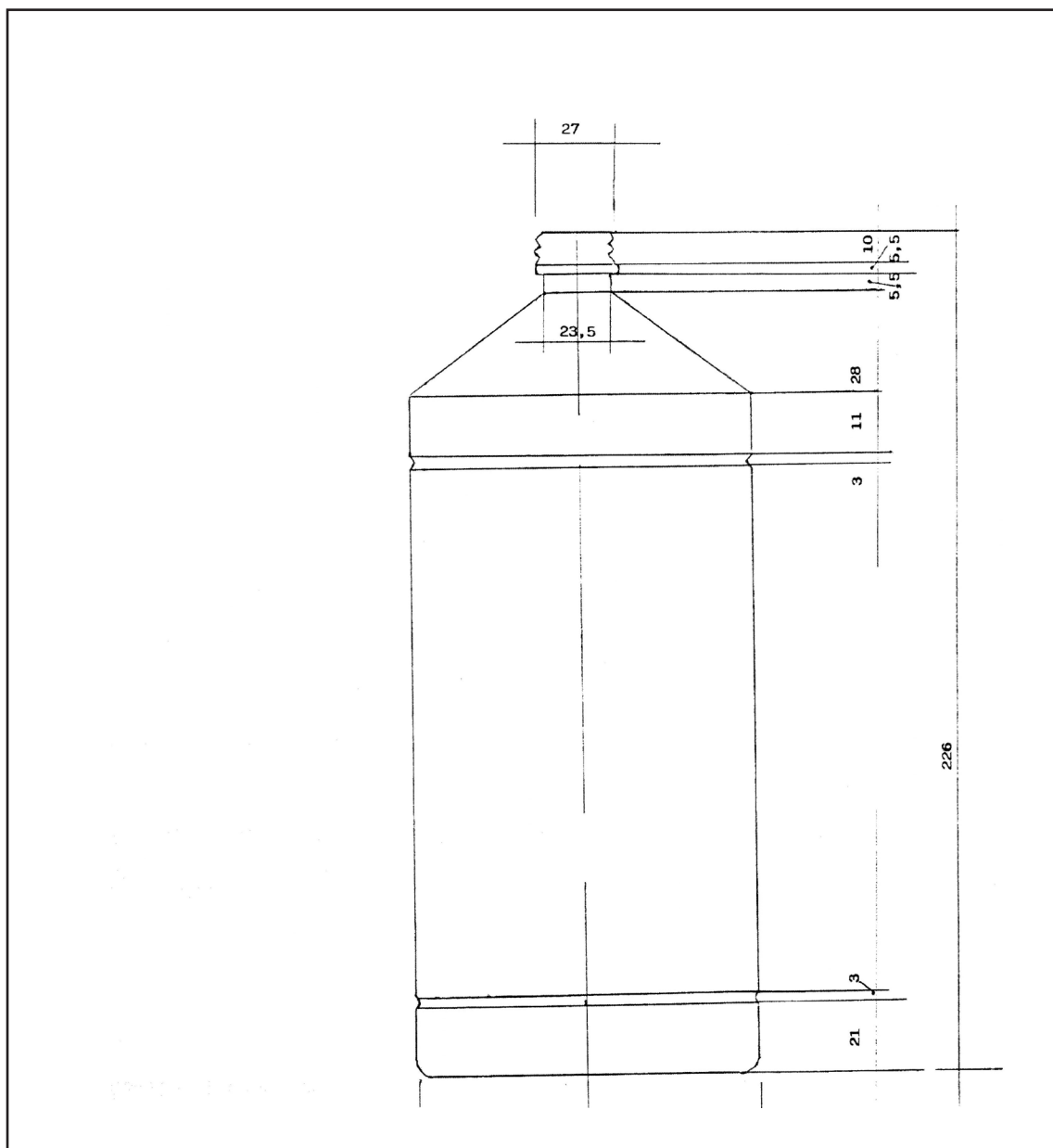


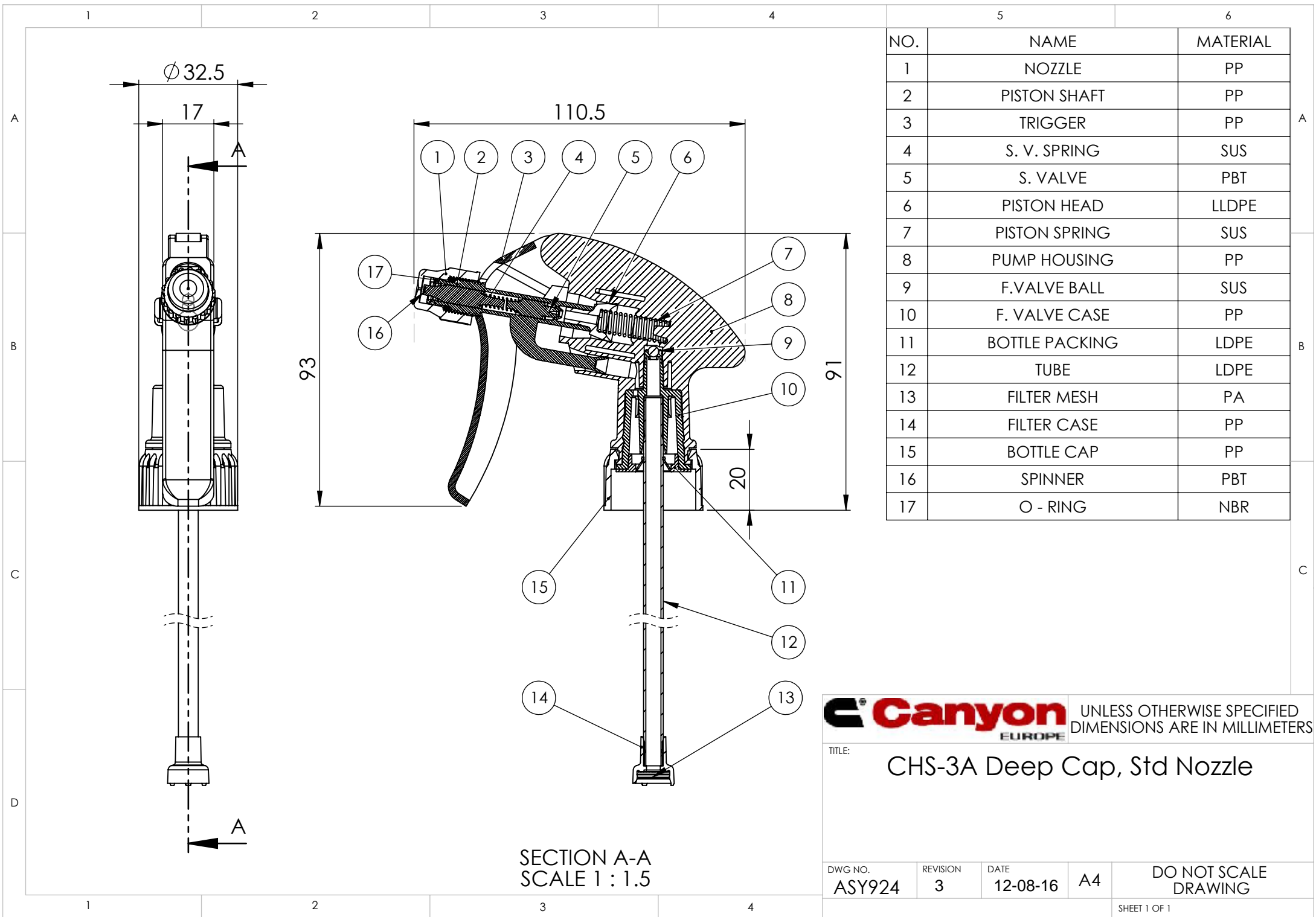
Especificaciones técnicas de la botella de 1000 cc cilíndrica

Material	Polietileno de Alta Densidad (HDPE) Repsol ALCUDIA 5203
Gramaje	55 ± 1 g
Capacidad	1000 ± 5 cc
Tolerancia en cotas	± 2%


FABRICANTE: FERBAL PLÁSTICOS, S.A.

Ref.: 2002/P Color Natural de 1000ML





NO.	NAME	MATERIAL
1	NOZZLE	PP
2	PISTON SHAFT	PP
3	TRIGGER	PP
4	S. V. SPRING	SUS
5	S. VALVE	PBT
6	PISTON HEAD	LLDPE
7	PISTON SPRING	SUS
8	PUMP HOUSING	PP
9	F.VALVE BALL	SUS
10	F. VALVE CASE	PP
11	BOTTLE PACKING	LDPE
12	TUBE	LDPE
13	FILTER MESH	PA
14	FILTER CASE	PP
15	BOTTLE CAP	PP
16	SPINNER	PBT
17	O - RING	NBR



UNLESS OTHERWISE SPECIFIED
DIMENSIONS ARE IN MILLIMETERS

TITLE:

CHS-3A Deep Cap, Std Nozzle

DWG NO.

ASY924

REVISION

3

DATE

12-08-16

A4

DO NOT SCALE
DRAWING

SHEET 1 OF 1